

## Prayer Letter

---

### January 2009

Dear friends,

*'In your hearts revere Christ as Lord. Always be prepared to give an answer to everyone who asks you to give the reason for the hope you have. But do this with gentleness and respect.'*

1 Peter 3:15 (TNIV)

I hope you all had time over Christmas to consider the unique way God comes to us in Christ. There are many kinds of 'gods' in our world, but it would be hard to identify any other that would accept such a humble, dirty and thoroughly risky way to begin the task of bringing salvation to the world! Did you know that Nepali Christians were given Christmas Day as a public holiday for the first time this year? Previously they had to take a day's holiday if they wanted to celebrate together. This year, rather than keeping their heads down, they took the chance to make as public as possible the joy and hope their faith brings them in very uncertain times in Nepal. They can identify with the kind of Saviour who was born in a stable, and whose very life was threatened from the word go.

This is my first prayer letter since last June. Then I had just completed a whirlwind of travel in Asia meeting new and old friends. The last eight months have seen more travel, and also a period of consolidating the new information and demands my current role comprises. I'm also enjoying having a place of my own to retreat to in Didcot, and somewhere I can host visitors. I've started to lead more services in UK churches, especially on behalf of BMS, and have enjoyed that very much. It's good to be able to put into practice regularly some of what I learned at Spurgeon's College. All in all I still have a lot to learn, but feel more settled day by day.

I would like to give you some updates, as well as some new snapshots, of mission work in the three countries I cover.

Bishnu and Indira, who appeared in my last letter, continue to do sterling work counselling and comforting patients in



western **Nepal**. Indira has developed her confidence and is now working independently of Bishnu. Breaking news is the appointment of a new Supported Partner Worker for BMS in Nepal. Bhupendra Kumar KC is the first Nepali Teacher Trainer with the Equip project in Kathmandu. Based at the school for mission children there, this 18 month old project set up by BMS personnel aims to offer teacher training in Nepali government schools as well as in Christian schools throughout the country. The Nepali education system is hampered by lack of funds, constant civil disturbance, and the numbers of children being kept off school to work in the fields. Our four Nepal Action Team girls are also helping with this work over the winter.



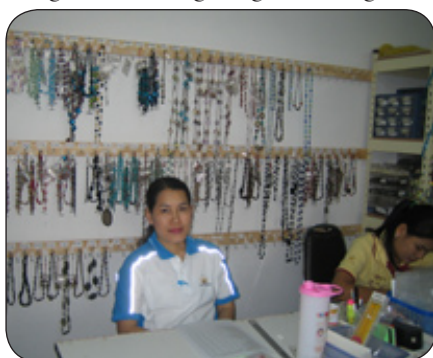
*Bhupendra*

Food shortages and rising prices continue to be an issue in **Bangladesh**, although last year's harvest was safely gathered in. Contrasting with the needs of the majority though, some very exciting news is the establishment of a weekly event meant to appeal to some of the most influential people in Bangladesh, set in an atmosphere where they feel comfortable: a five-star hotel! This



courageous and costly initiative has come about through a variety of partnerships, and has been attracting up to 70 people a week since it started in October. It gives a unique opportunity to reach people who otherwise would never attend such a meeting, and while it is not possible to give many details for security reasons, would benefit greatly from prayer support. There are different kinds of hunger in Bangladesh today, and spiritual hunger touches everyone, well-fed or otherwise.

**Thailand** has been much in the news with its own political wranglings, and the concern of its people for politicians who are honest and really care for them. BMS personnel in Thailand are living through these days alongside Thai people, seeking to demonstrate God's love in every way they can. One of these ways is to enable women who have been sold into prostitution from all over the world to escape that life and restore their sense of self-worth and dignity in the eyes of others through employment making beautiful and high quality jewellery. BMS worker Emily Chalke works with the organisation NightLight in Bangkok, visiting brothels to befriend women, and invite them to make a new start. This is exhausting, risky and challenging work, but also a pure expression of the gospel of Christ,



*NightLight*

which is meant for all made in the image of God.

These are just glimpses of some of the dedicated BMS people and work I have been able to visit this year on your behalf. My role is to encourage and enable them to do as good a job as possible, so that both they and the people they live among can experience life in all its fullness, just as Christ came to bring.

Thanks to all of you for your prayers and encouragement. May you each know that same full quality of life throughout 2009.

*With love,  
Margaret*

BMS World Mission supports 350 personnel working in 34 countries of the world. Together they are involved mainly in church planting, development, disaster relief, education, health and media and advocacy. If you would like to support the work of BMS you can make a one-off donation, or you can become a 24:7 Partner for as little as £2 per month. Visit [www.bmsworldmission.org](http://www.bmsworldmission.org) or call 01235 517617 for a 24:7 Partners leaflet, or 01235 517641 for our donation hotline.



PO Box 49 129 Broadway  
Didcot Oxfordshire OX11 8XA  
Tel: 01235 517700  
Fax: 01235 517601

E-mail: [prayer@bmsworldmission.org](mailto:prayer@bmsworldmission.org)  
Website: [www.bmsworldmission.org/prayer](http://www.bmsworldmission.org/prayer)

Registered as a charity in England and Wales  
(number 233782) and in Scotland (number SC037767)