

Beckenham Baptist Church

a caring christian church at the heart of the community

Elm Road, Beckenham, Kent BR3 4JB

Telephone: 020 8650 2130 E-mail: office@beckenhambaptist.org.uk

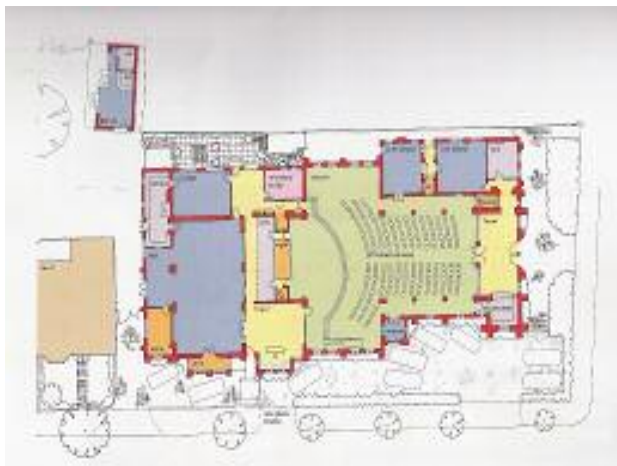
Web Page: www.beckenhambaptist.org.uk

REGENERATION PROJECT

Beckenham Baptist Church is at an exciting stage in its 125 year old history. When the church was built in 1883 there was very little by way of other buildings around it, and very little by way of congregation, to go with the vision that the London Baptist Association had in planting the church in the first place. As



houses were built in the area so the congregation quickly grew and soon it had truly become 'a caring Christian Church at the heart of the community'. Local people have always had a special place in their hearts for 'Elm Road Chapel' (as it was popularly known) and although a Baptist Church (and not Anglican) it has been thought of by locals as the 'Parish Church' for this part of



Beckenham. Its many community based activities and programmes, such as Senior Citizens and Disabled Groups, Pre-School, Toddlers, Parenting, Youth Club and Uniformed Organisations, have proved very popular and drawn generations of children and adults to the church down through the years.



Now we are in the process of undertaking what we have called our 'Regeneration Project' – a redevelopment of our entire premises in line with the various ministries of the church in the community that we believe God is calling us to. Already underway is the Garden Project - the creation of

a large Community Garden at the back of the church and the building of a Garden House to use with our Youth Work and the various events we are already holding at various times during the year in the Church Garden such as concerts, garden parties, firework night, the Pre-School Teddy Bears' Picnic, and so on. Also planned is a new day time side entrance with large reception area, a cafeteria area, church offices (now completed) and a revamped sanctuary and church halls. The church also owns No. 2 Elm Road which is being redeveloped as part of the Regeneration Project to provide three good quality flats which will eventually be used for staff accommodation and social housing.

Congregations are growing steadily and visitors regularly comment on the lively worship, friendly atmosphere and helpful teaching. Why not come along one Sunday morning at 10.30 a.m. and give us a try? Alternatively we are running a short seven week 'Just Looking' course on Thursday evenings for those who want to know more about what it really means to be a Christian. For more information telephone our Ministers, the Revs. Jim and Julia Binney on 020 8650 6271.

